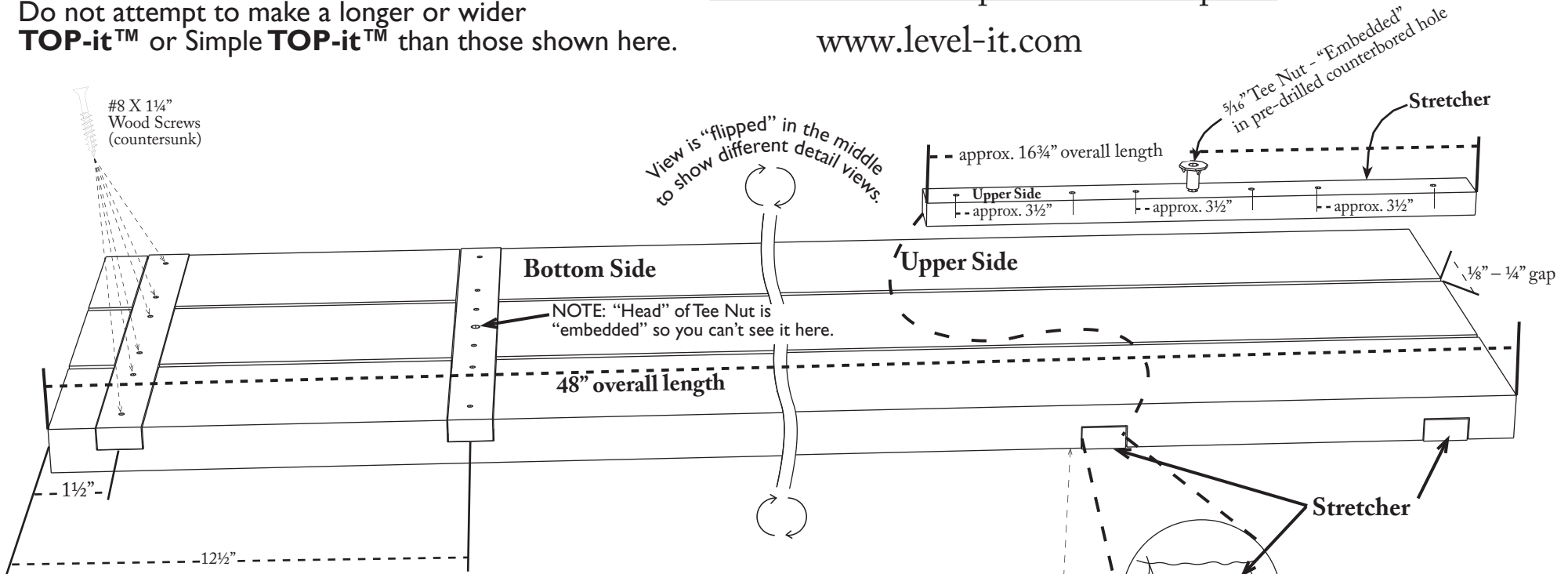


For your safety: do **NOT** exceed the dimensions shown here for a **TOP-it™** or Simple **TOP-it™**. Do not attempt to make a longer or wider **TOP-it™** or Simple **TOP-it™** than those shown here.

TOP-it™ & Simple TOP-it™ plans

www.level-it.com

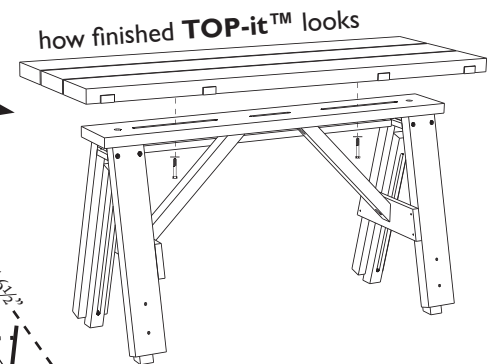
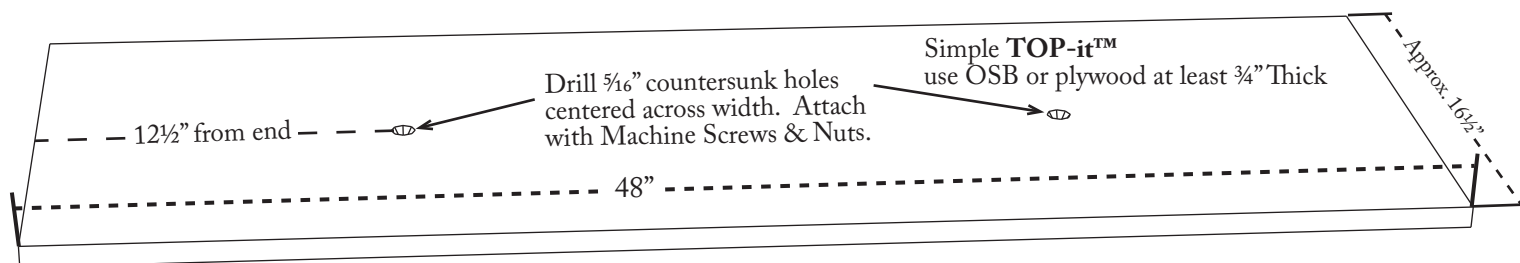


Use standard softwood 2 X 6 lumber (actual size 1 1/2" X 5 1/2") that is clean & strong. Cut 4 hardwood (oak, maple or other) stretchers to length that allows for a 1/8" - 1/4" gap between the 2 X 6's (approx 16 3/4"). Cut dados (grooves) in the 2 X 6's that are wide enough to accept the hardwood stretchers and not quite as deep as the stretchers are thick. Drill counterbored holes in two inner stretchers only to accept the two 5/16" "embedded" Tee Nuts. Install ("embed") the Tee Nuts into the two inner stretchers only. Drill 6 countersunk pilot holes in each stretcher (as shown) for the attachment screws. Attach the four stretchers in the grooves using #8 X 1 1/4" Wood Screws.

WOW! For a full size workbench, picnic/barbecue table, gardening bench or hobby/crafts table you can make a TOP-it™ or a Simple TOP-it™. HERE'S HOW!

Use 5/16" X 2" bolts & fender washers to attach to "embedded" Tee Nuts through slots in LEVEL-it® top like this

TIP! Make up a few TOP-it™'s or Simple TOP-it™'s. They're inexpensive to make. Keep tools mounted to them and swap them on & off your LEVEL-it®'s for fast access!



Make a **TOP-it™** full-size bench top for your **LEVEL-it®**

You can easily make a larger top which bolts easily to your **LEVEL-it®**. You can attach it to or remove it from your **LEVEL-it®** easily with two bolts..

The drawn plan gives the basic dimensions for the 2 X 6 pieces and shows the way we made them here originally in our own shop. The following plan is easier and faster to make with simpler tools. Either will work.



The photo above shows a **TOP-it™** mounted onto a **LEVEL-it®** with two bolts.



The photo above shows a **TOP-it™** about to be mounted onto a **LEVEL-it®** with two bolts. The **TOP-it™** is laying upside down on a **LEVEL-it®**.



Here are all the parts and tools to make a **TOP-it™** cut and ready to be drilled and assembled. Also needed are 4 shims that will be used to space the 2 X 6 pieces evenly (2 popsicle sticks, each cut in half, work well).

Parts list — lumber:

3 nice clean pieces of Kiln Dried 2 X 6 lumber from a Home Center or lumber yard.

Use “Home Center” grade. Cut them to a length of 48”.

3 pieces of Kiln Dried 1 X 10 lumber. Cut these pieces to a length of 16 $\frac{5}{16}$ ”.

(The third piece can be narrower.)

Parts list — hardware:

30 - #8 X 2” exterior grade flat-head wood screws (self-tapping are nice, but not required).

Use Phillips head or Square head, depending on the kind of screwdriver you have.

2 - $\frac{5}{16}$ ” Tee-nuts

Tools:

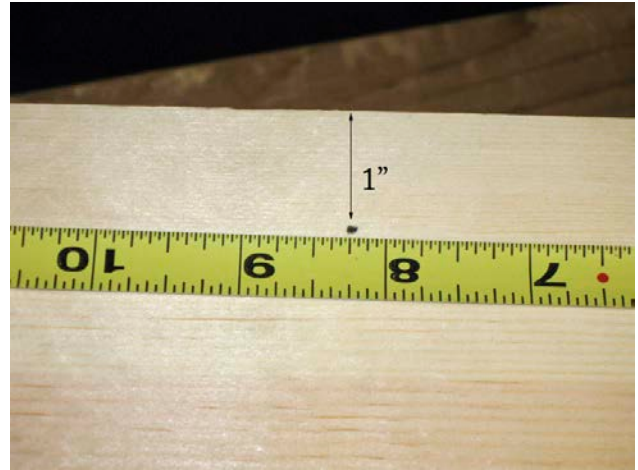
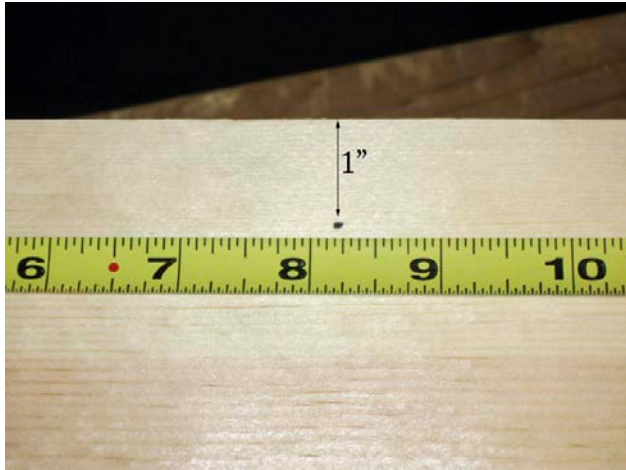
Cordless (or corded) driver/drill.

1” forstner bit

$\frac{7}{64}$ ” drill bit and countersink

tape measure

pencil

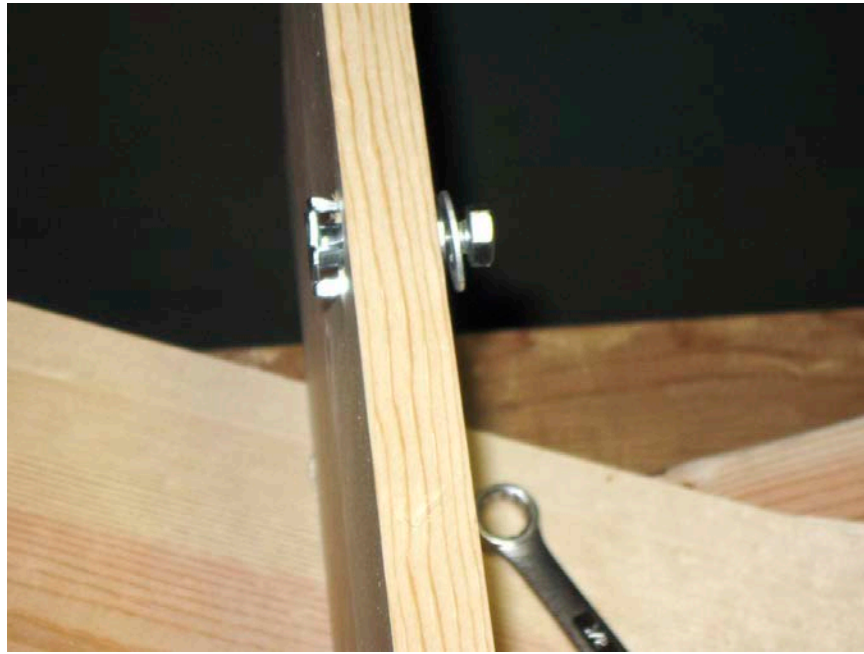


Measure along the lengths of two of the 1 X 10's and place a centered mark 1" from an edge of each board. (By measuring first from one end and then the other the exact center can be found)

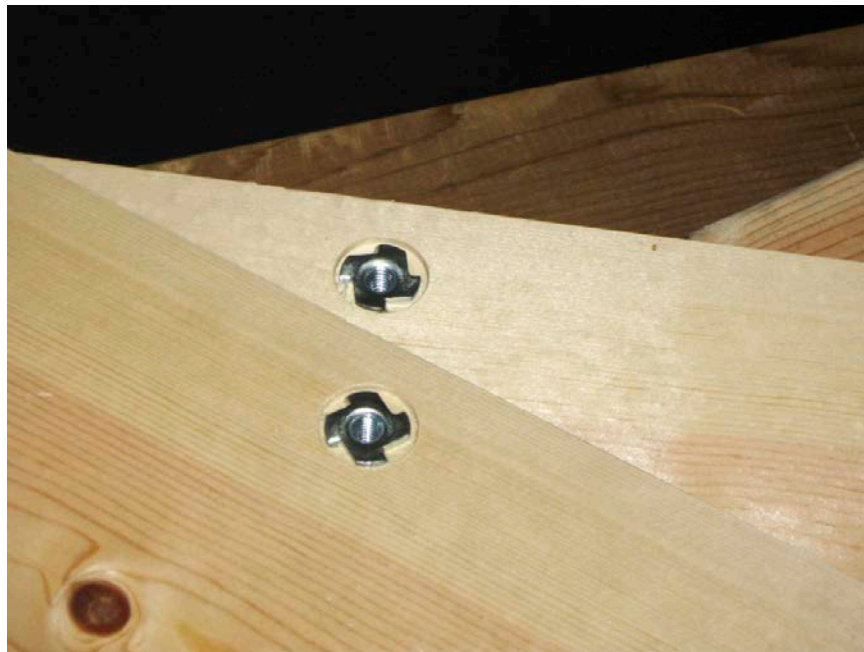


Using the 1" forstner bit, drill a shallow hole only about $\frac{1}{8}$ " deep on each of the two marks drawn in the previous step. Next drill a $\frac{25}{64}$ " through-hole at the center of the larger hole. See photos above.

Place a Tee-nut in each of the two holes as shown above.



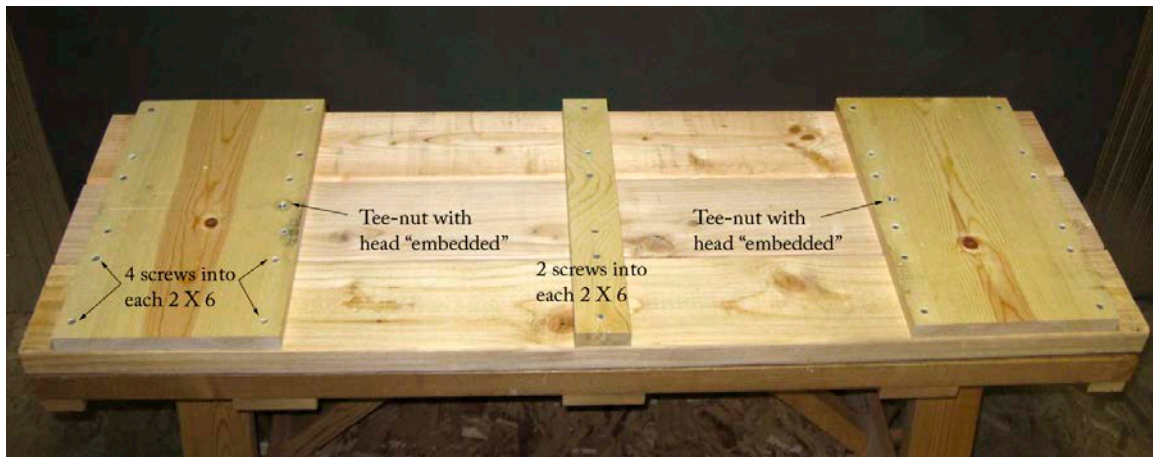
While it is possible to simply tap the Tee-nuts into place with a hammer, using a short bolt and several washers along with a wrench to tighten each Tee-nut into place ensures that they go straight and perpendicular into the holes. This makes the attaching and removing of the **TOP-it™** to and from the **LEVEL-it®** much easier every time one bolts or unbolts it.



Once properly embedded the Tee-nuts should look like this.



Lay the three 2 X 6's next to each other. Their bottom sides should be facing up and you may choose to have the least attractive sides facing up now since they'll be on the bottom and you won't see them when using the **TOP-it™**. Place two popsicle stick shims between each 2 X 6 as shown above to create a little space between boards in the finished **TOP-it™**.



Proceed to screw the 1 X 10's (and the center board) to the underside of the 2 X 6's as shown above. Note that the Tee-nuts are placed so that their large heads are closest to the 2 X 6's — the Tee-nut heads are now “embedded”.

The 1 X 10's need to be mounted in such a way that the two Tee-nuts will be over slots in the **LEVEL-it®** top. This is important since you'll be using these Tee-nuts to bolt the **TOP-it™** onto the **LEVEL-it®**. The distance between the two Tee-nuts is around 28" or 28½".



Now it's time to mount the **TOP-it™** onto the **LEVEL-it®** using two $\frac{5}{16}$ " X 2" hex bolts and washers.



When looking at a **TOP-it™** mounted on a **LEVEL-it®** from either end, it should look like the photo above.



Here are the two $\frac{5}{16}$ " X 2" bolts, each with a flat washer and a fender washer ready to mount the **TOP-it™** to the **LEVEL-it®**. Tightening of the bolts requires a $\frac{1}{2}$ " or adjustable wrench. Any of the wrenches shown could be used. Pliers are NOT recommended as they ruin the heads of the bolts over time.



With the **TOP-it™** placed on top of the **LEVEL-it®** thread each bolt up through a slot in the **LEVEL-it®** top as shown here and hand tighten each into a Tee-nut.



Complete mounting the **TOP-it™** to the **LEVEL-it®** by tightening each bolt with a wrench until snug as shown here.



When complete the **LEVEL-it**® with mounted **TOP-it**™ should look like this. This particular **LEVEL-it**® has a shelf mounted as well.